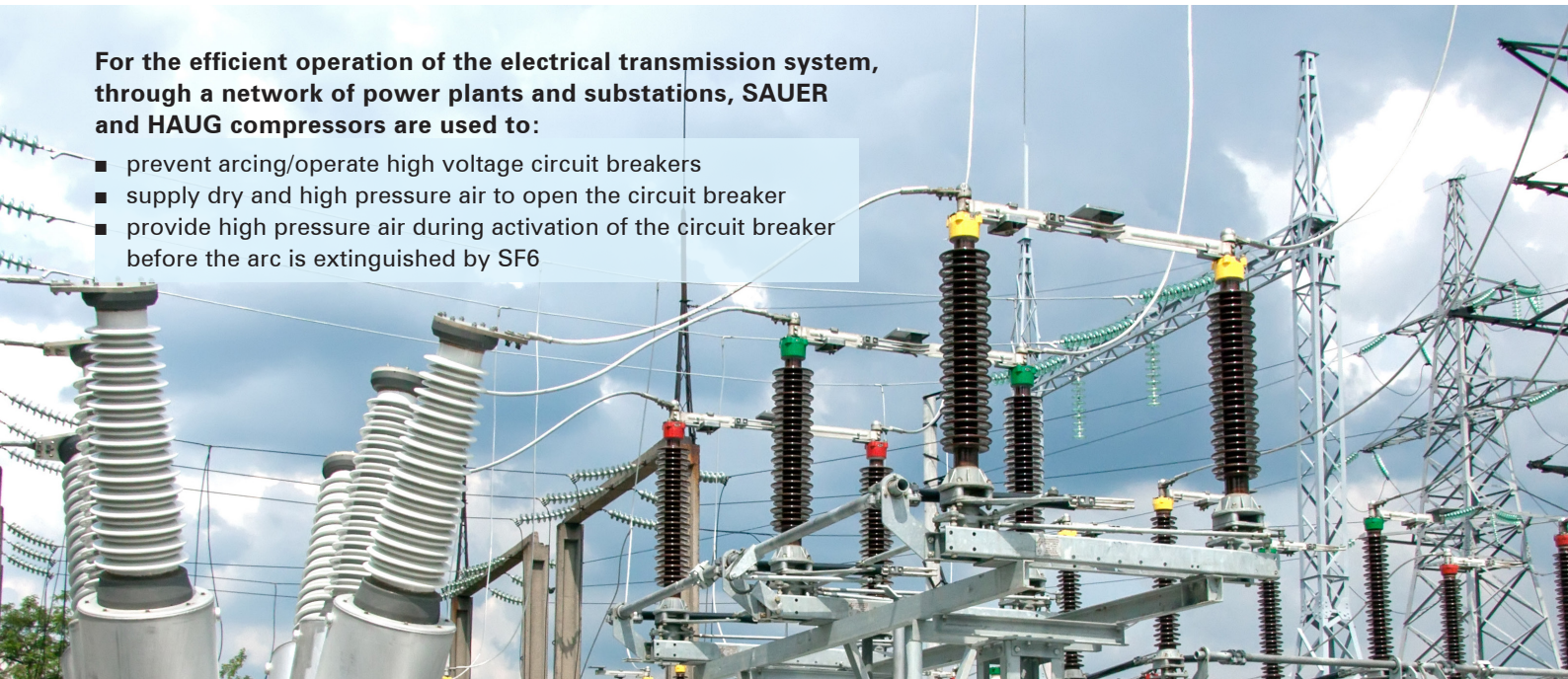


Compressor solutions for power transmission stations



For the efficient operation of the electrical transmission system, through a network of power plants and substations, SAUER and HAUG compressors are used to:

- prevent arcing/operate high voltage circuit breakers
- supply dry and high pressure air to open the circuit breaker
- provide high pressure air during activation of the circuit breaker before the arc is extinguished by SF6



Product line

SAUER

Product ranges

Mistral

Hurricane

HAUG.Cygnus

Variants

Basic
ComSilent

Volumetric flow
39 - 75 scfm

Pressure range
435 - 3916 scfm

Media
Air



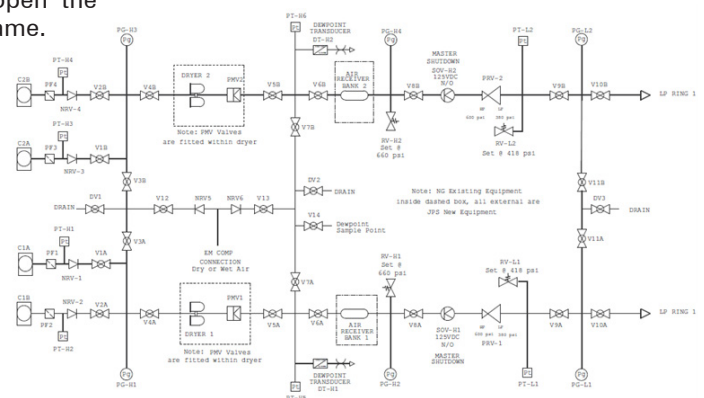
Compressors

Sauer and Haug compressors are being used in the demanding circuit breaker mechanism to avoid voltaic arcs formation with the supply of compressed dry air between 435 - 3916 psig.

Common supply

Energy power substation plants have high pressure systems to cut the voltaic arc which is generated when switching circuits in high tensions (up 94 HP to 670 HP). Compressed air is blasted up to open the breaker contact, at the same time this extinguishes the arc flame.

The most common application requires pressured air at 435 psig for smaller substations with up to 369 HP. For the larger stations up to 670 HP at 3916 psig compressed air system is installed. The air is stored in high pressure receiver vessels (2176 - 3626 psig) due to its volume (physical space) and to get it dryer.



Dependable up to 7,000 bar – anywhere, anytime, anygas.

Sauer Compressors USA
235 Log Canoe Circle
Stevensville, MD 21666

PHONE (410) 604-3142
E-MAIL sales@sauerusa.com
WEB www.sauerusa.com